



# ET51 & ET56 Android and Windows 10

## Configuration & Accessories Guide

Designed to assist customers and partners  
with model and configuration guidance



Oct 2023

# ET51 & ET56 Tablet Configuration Matrix

# Configuration Matrix

ET5	1		A		E		W		1		2		E		(Blank if not used)		(Blank if not used)		← Combined Sample SKU for this Description	
	Radios		Modem / Region		Display		Operating System		Processor		Memory (GB) (RAM / FLASH)		Localization		Custom Feature		Country or Region		8 in, WLAN, Win10, E3940, 4GB/64GB, WW	
1	WLAN Only	A	WLAN Only Intel - WW	E	8.4 in.	W	Windows 10 IoT	1	Intel E3940	1	4 / 32	E	English	00	None	Blank	Worldwide			
6	WLAN & WWAN	B	WLAN & WWAN Intel / Telit - WW	T	10.1 in.	G	Android GMS	2	QC SD660	2	4 / 64	F	French	DT	Disabled Features	NA	US / CAN / PR			
		C	WLAN Only Qualcomm - WW			L	Android Non-GMS			3	4 / 128	I	Italian	FT	TAA / FIPS Compliant	A6	RoW			
		D	WLAN & WWAN Qualcomm - NA							4	8 / 64	G	German	MT	Mounted Tablet	CN	China			
		E	WLAN & WWAN Qualcomm - RoW (10" Form Factor)							5	8 / 128	S	Spanish	SF	Integrated Scanner	EA	EEA countries			
												M	Chinese Simplified			IA	India			
												C	Chinese Traditional							
												P	Brazilian & Portuguese							
												H	Hebrew							
												J	Japanese							
												SW	Swedish							
												K	Korean							
												R	Russian							

Examples														Part Number				Description			
ET5	6		B	T	-	W		1		2		E	-			ET56BT-W12E	10 in, WWAN, Win10, E3940, 4GB / 64GB, WW				
ET5	1		C	T	-	G		2		1		E	-	00	NA	ET51CT-G21E-00NA	10 in, WLAN, And GMS, SD660, NA				
ET5	6		D	E	-	G		2		1		E	-	00	A6	ET56DE-G21E-00A6	8 in, WWAN, And GMS, SD660, RoW				
ET5	1		C	E	-	L		2		1		E	-	00	CN	ET51CE-L21E-00CN	8 IN, WLAN, And non-GMS, SD660, China				
ET5	1		A	E	-	W		1		5		E	-	SF		ET51AE-W15E-SF	8 in, WLAN, Win10, 8/128, Integrated Scanner, WW				
ET5	1		C	E	-	G		2		1		E	-	SF	A6	ET51CE-G21E-SFA6	8 in, WLAN, And GMS, 4/32, Integrated Scanner, RoW				
ET5	1		C	E	-	G		2		1		E	-	SF	NA	ET51CE-G21E-SFNA	8 in, WLAN, And GMS, 4/32, Integrated Scanner, NA				

# ET51 & ET56 Accessory Ecosystem

# Accessory Ecosystem Overview

Internal batteries  
(Specific part numbers for new ET51 / ET56 on pg. 15.)



Optional PowerPack Battery



4-Slot Aux Battery Charger



Operations Case



Expansion Back + Rotating Hand Strap



SE4750 and SE4710 Expansion Back + Rotating Hand Strap



Rugged Frames



D-Clips



Handle



Breakaway shoulder strap



Passive Stylus



USB Wall Charger & USB-C Cable



Single-Slot Charge Cradle



Single-Slot Charge Dock



Rugged Charge Connector




ShareCradle System



**One of these five solutions *is required* for tablet charging (pp. 6-9).**

**NEW:** Wired USB-C headset For PTT and VOIP



# Charging Cradles and Docks with Communication Ports



## USB Power Supply & Cable



**PWR-WUA5V12W0xx**  
USB Power Supply



**CBL-TC2X-USBC-01**  
USB-A to USB-C cable



- USB Power Supply and USB-C Cable combination approved for use with ET51 / ET56 tablets and ET51 with Integrated Scanner devices.
- Attaches to USB-C side port (tablet) or covered port (integrated scanners).
- Consumer grade connector, price, and durability.
- PWR-WUA5V12W0xx: 5V, 2.5 Amp (12.5W) AC to USB-A
- Approximate charge time (8 in. device): 3 hours from 0 to 90% capacity
- **Note:** Power Supply (PWR-WUA5V12W0xx) and USB-C Cable (CBL-TC2X-USBC-01) are each **Sold Separately**
- **Note:** All regional power supplies (PWR-WUA5V12W0xx) are qualified for use with ET5x tablets; where, **xx** represents:
  - **AR**, Argentina; **AU**, Australia; **BR**, Brazil; **CN**, China; **EU**, EU Countries;
  - **GB**, Hong Kong, Ireland, UK, & others; **IN**, India; **KR**, Korea; **US**, United States

## Charge Only 1-Slot Dock



**CRD-ET5X-1SCG2**  
ET5X 1-Slot Charge Only Dock



- Supports charging for **all** ET5x tablets
- Accepts tablets with or without **Integrated Scanners**
- Accepts tablets with or without **Expansion Backs or Rugged Frames**
- Auxiliary PowerPack also charges while inserted in an Expansion Back
- **Note:** Requires Power Supply (PWR-BGA12V50W0WW), DC Line Cord (CBL-DC-388A1-01), and country specific AC Line Cord (e.g. 23844-00-00R); **Sold Separately**



# Charging Cradles and Docks with Communication Ports



## Charge & Communication 1-Slot Dock



**CRD-ET5X-1SCOM1**  
ET5X 1-Slot Charge and Communication Dock

- Charges and extends I/O for: HDMI, Ethernet & 3 USB ports
- Accepts tablets with or without **Expansion Backs**
- Auxiliary PowerPack also charges while inserted in an Expansion Back
- Accepts tablets with or without **Rugged Frames**
  - **Does not support Rugged I/O connectors that can be optionally implemented with the Rugged Frames**
- **Does not accept** tablets with **Integrated Scanners**
- **Note:** Requires Power Supply (PWR-BGA12V50W0WW), DC Line Cord (CBL-DC-388A1-01), and country specific AC Line Cord (e.g. 23844-00-00R); **Sold Separately**



## Rugged Charge & Comms 1-Slot Dock



**CRD-ET5X-1SCOM2R**  
1-Slot Dock with Rugged IO Adapter

- Charges & extends tablets equipped with a Rugged I/O Connector for HDMI, Ethernet, and 3 USB Ports
- Accepts tablets with or without **Integrated Scanners**
- Accepts tablets with or without **Expansion Backs**
- Auxiliary PowerPack also charges while inserted in an Expansion Back
- **Note:** This cradle requires Rugged I/O Connector, **SG-ET5X-RGIO2-01**. If the tablet / rugged frame combination does not charge, the existing Rugged I/O Connector must be replaced. This situation will occur with Rugged Frames & Connectors sold prior to December 2018.
- **Note:** Requires Power Supply (PWR-BGA12V50W0WW), DC Line Cord (CBL-DC-388A1-01), and country specific AC Line Cord (e.g. 23844-00-00R); **Sold Separately**



# Rugged Charging Docks, Cable Chargers, and I/O Connectors



## Rugged Charge Connector



**CHG-ET5X-CBL2-01**  
Rugged Charge Connector

- Rugged charge cable breaks away to prevent tablet damage
- DC barrel input on the side
- Works on tablets with or without Rugged Frames
- This connector is **not compatible** with **ET51 with Integrated Scanner models**
- **Note:** Requires Power Supply (PWR-BGA12V50W0WW), DC Line Cord (CBL-DC-388A1-01), and country specific AC Line Cord (e.g. 23844-00-00R); **Sold Separately**



## Rugged Charging Adaptors



**SG-ET5X-RGIO2-01**  
Replacement Rugged I/O Connector

- Replacement I/O connector for Rugged Frames
- This part is included when ordering a new Rugged Frame
  - SG-ET5X-8RCSE2-02, SG-ET5X-10RCSE2-01
- This connector is compatible with **all** charging cradles and docks except the non-Rugged ET5X 1-Slot Charge and Communication Dock (CRD-ET5X-1SCOM1).
- **Note:** If a new dock is purchased and the tablet / rugged frame combination does not charge in it, most likely the existing rugged I/O connector needs to be replaced with this new version. This situation will occur with Rugged Frames & Connectors sold prior to December 2018.



# ShareCradle System



## 4-Slot ShareCradle



**CRD-ET5X-SE4CO2-01**  
ET5X 4-Slot Charge Only Cradle

- ShareCradle System for use with ET51/ET56 8- and 10-inch tablets.
- ShareCradle System uses ET5x Terminal & Spare Battery Cups designed to be shared across the Zebra suite of Charge Only bases.
- Option to mount a 4-Slot PowerPack Charger (**SAC-ET5X-4PPK1-01**)
- Fits on a tabletop, wall mounted, or rack mounted (requires 19 in. rack mounting accessory **BRKT-SCRD-SMRK-01** ***sold separately***)
- Accepts tablets with or without **Expansion Backs or Rugged Frames**
- Not recommended for use with ET51 Integrated Scanning devices (see **CRD-ET5X-SE4CO3-01**)
- **Note:** ShareCradles require Power Supply (PWR-BGA12V**108**W0WW), DC Line Cord (CBL-DC-38**2**A1-01), and country specific AC Line Cord (e.g. 23844-00-00R); **Sold Separately**



## With Cups for Integrated Scanner



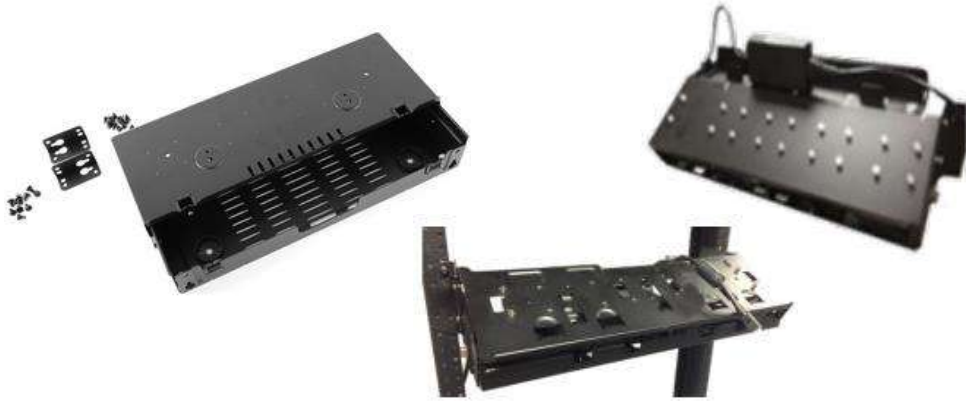
**CRD-ET5X-SE4CO3-01**  
4-Slot Charge Only ShareCradle for ALL ET5X Tablets  
(with or without Integrated Scanner)

- ShareCradle System for use with ET51/ET56 8- and 10-inch tablets, **and ET51 8 in. tablets with integrated scanner.**
- ShareCradle System uses ET5x Terminal & Spare Battery Cups designed to be shared across the Zebra suite of Charge Only bases.
- Option to mount a 4-Slot PowerPack Charger (**SAC-ET5X-4PPK1-01**)
- Fits on a tabletop, wall mounted, or rack mounted (requires 19 in. rack mounting accessory **BRKT-SCRD-SMRK-01** ***sold separately***)
- Accepts tablets with or without **Expansion Backs or Rugged Frames**
- **Note:** ShareCradles require Power Supply (PWR-BGA12V**108**W0WW), DC Line Cord (CBL-DC-38**2**A1-01), and country specific AC Line Cord (e.g. 23844-00-00R); **Sold Separately**



# ShareCradle Mounting Option

## ShareCradle Mounting Bracket



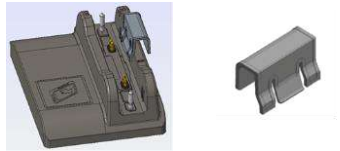
**BRKT-SCRD-SMRK-01**  
Multi-Slot ShareCradle Mounting Bracket

- Allows for rack and wall mounting of all Multi-Slot ShareCradles OR can be used to mount up to four 4-Slot PowerPack Battery Chargers.
- Bracket can be mounted on standard 19" network rack or on a wall.
- Cable routing slots & removable power supply tray.
- Adjustable tabs & screw mounts for easy hanging/installation with ability to support one Multi-Slot ShareCradle or four 4-Slot Battery Chargers and their power supplies.

# ShareCradle Cup/Shim Set & PowerPack Charger



## 4-Slot ShareCradle Cup/Shim Set



### CRD-ET5X-SE4CO3-UPGR1-04

4 ShareCradle Cups & Shims to Fit ET5x 8" with Integrated Scanner

- Add this set of cups and shims to previously released ShareCradles to accommodate ET51 tablets with Integrated Scanners.
- This set is not necessary for other ET5x tablets with or without the Rugged Frame
- Provides the perfect fit for an ET51 with Integrated Scanners in CRD-ET5X-SE4CO2-01 ShareCradles
- This set is already supplied with CRD-ET5X-SE4CO3-01. No additional orders are needed for this model.

## 4-Slot PowerPack Charger



### SAC-ET5X-4PPK1-01

ET5X 4-Slot Battery Charger for Optional PowerPack

- Standalone 4-slot charger with charge state indicator LEDs
- Can be docked in 4-slot ShareCradle via adapter cup
  - Requires its own power supply even while docked with ShareCradles
- **Note:** 4-Slot PowerPack Chargers require Power Supply (PWR-BGA12V50W0WW), DC Line Cord (CBL-DC-388A1-01), and country specific AC Line Cord (e.g. 23844-00-00R); **Sold Separately**



# Rugged Frames, D-Clips & Tethers

## 8 in. & 10 in. Rugged Frames



### SG-ET5X-8RCSE2-02

8 in. Rugged Frame with Rugged I/O connector (Included)



### SG-ET5X-10RCSE2-01

10 in. Rugged Frame with Rugged I/O connector (Included)

- Improves drop protection to 6 ft (2m) to concrete
- Sealed I/O connector replaces bottom dust cover
- Screw bosses on back to attach hand and shoulder straps
- Works with or without Expansion Backs

## D-Clips & Tethers



### SG-ET5X-DCLIP2-02

2 D-Clips attach to screw bosses in rugged frame



### SG-TC7X-STYLUS-03

TC7X 3-Pack STYLUS + TETHER

- TC7X passive stylus (no batteries needed, more durable)
- 3-Pack + Tether (single stylus unit is not available)
- **Note:** stylus will not work in areas where water is pooled on the screen



### SG-ET5X-SLTETR-01

Stylus coil tether

- Coiled tether provides a convenient method to keep your tablet and pen together without compromising your usage experience

# Operations Cases, Straps, and Headsets

## 8 in. & 10 in. Operations Case



FRONT VIEW

**SG-ET5X-8HLST-01**  
8 in. Operations Case



BACK VIEW

**SG-ET5X-10HLST-01**  
10 in. Operations Case

- Supports tablet **without** rugged frame or integrated scanner
- Made of a leather with a pen loop for stylus
- D-Clip points in 4 corners support addition of:
  - Hand strap (sold separately)
  - Shoulder strap (sold separately)
- Mounting points accommodate additional accessories
- Works with or without Expansion Backs

## NEW: USB-C Headset



**HDST-USBC-PTT1-01**

- One-piece solution wired USB-C headset mono with microphone
- For Push-To-Talk (PTT) applications with volume up/volume down/PTT buttons (Compatible with PTT Express/Pro)
- Connects to USB-C port on TC21/TC26, ET5x, EC5x, TC53/TC58
- Rotating earpiece allows for right or left ear configuration
- Includes clip for attaching PTT button to clothing

# Operations Cases & Straps

## Hand Strap



**SG-ET5X-HNDSTP-01**  
Handle strap

- Hand straps attach to rugged frame via D-Clips
- Hand strap has plastic grips for carrying comfort
- Handles can **not** be added to tablets with integrated scanners

## Shoulder Straps



**SG-ET5X-SHDRSTP-01**  
Break away Shoulder Strap

- Shoulder straps attach to rugged frame via D-Clips
- Break away shoulder strap releases from tablet to prevent damage when snagged
- Straps can **not** be added to tablets with integrated scanners

# Expansion Backs with Built-in Scanner & Rotating Hand Strap

## SE4770 for Windows or Android OS



ZBK-ET5X-8SCN5-01 (Windows, 8 in.)  
ZBK-ET5X-8SCN7-02 (Android, 8 in.)

ZBK-ET5X-10SCN5-01 (Windows, 10 in.)  
ZBK-ET5X-10SCN7-02 (Android, 10 in.)

- Rotating Hand Strap base with built-in Scanner
- Expansion back screws to back of tablet; replacing battery door
- Captures 1-D and 2-D bar codes in virtually any conditions, at lightning speed via Laser aimer
- **Note:** Optional Auxiliary PowerPack (**BTRY-ET5X-PRPK2-01**; ***sold separately***) can be inserted in base

## SE4710 for Windows OS \***Only**\*



ZBK-ET5X-8SCN1-01 (8 in.)

ZBK-ET5X-10SCN1-01 (10 in.)

- Rotating Hand Strap base with built-in Scanner
- Expansion back screws to back of tablet; replacing battery door
- Captures 1-D and 2-D bar codes via LED aimer (Indoor use)
- **Note:** Optional Auxiliary PowerPack (**BTRY-ET5X-PRPK2-01**; ***sold separately***) can be inserted in base

# Expansion Back (No Scanner) & Auxiliary PowerPack

## Expansion Back (No Scanner)



ZBK-ET5X-8RH1-01 (8 in.)

ZBK-ET5X-10RH1-01 (10 in.)

- Expansion back screws to back of tablet; replacing battery door
- Rotating Hand Strap base
- **Note:** Optional Auxiliary PowerPack (**BTRY-ET5X-PRPK2-01**; ***sold separately***) can be inserted in base

## Auxiliary PowerPack Battery



**BTRY-ET5X-PRPK2-01**

24.5Wh of additional charging capacity (3400mAh @ 7.2V)

- Hot swappable; enables 24x7 usage
- Used in addition to the main battery capacity
- Charges with 4-slot battery charger (**SAC-ET5X-4PPK1-01**)
- Charges when tablet & Expansion Back are in 1-slot Dock or ShareCradle
- Gas Gauge LED to display the amount of charge
- **Note:** Designed for use with any Expansion Back



# ET51 & ET56 Internal Batteries

## Internal Batteries for *Android OS*



**BTRY-ET5X-8IN5-01**  
8 in. Tablet Internal Battery

- 6440mAh / 3.8V / 24.4Wh
- Rechargeable Li-Polymer; User replaceable
- 5-6 hours continuous WLAN usage with display on



**BTRY-ET5X-10IN5-01**  
10 in. Tablet Internal Battery

- 9660mAh / 3.85V / 37.1Wh
  - Rechargeable Li-Polymer; User replaceable
  - 8-9 hrs continuous WLAN usage with display on
- **Note:** ET50 / ET55 internal batteries are **NOT COMPATIBLE** with the new ET51 / ET56 Tablets (and vice versa)

## Internal Batteries for *Windows OS*



**BTRY-ET5X-8IN3-01**  
8 in. Tablet Internal Battery

- 3300mAh / 7.6V / 25.1Wh
- Rechargeable Li-Polymer; User replaceable
- 5-6 hours continuous WLAN usage with display on



**BTRY-ET5X-10IN3-01**  
10 in. Tablet Internal Battery

- 4950mAh / 7.7V / 38.1Wh
  - Rechargeable Li-Polymer; User replaceable
  - 8-9 hrs continuous WLAN usage with display on
- **Note:** ET50 / ET55 internal batteries are **NOT COMPATIBLE** with the new ET51 / ET56 Tablets (and vice versa)

# ET51 & ET56 Replacement Battery Doors

## 8 in. Replacement Battery Doors



**KT-ET5X-8BTDR2-01**  
ET51/ET56 8" Battery Door

- Standard replacement, push-on battery door



**KT-ET5X-8BTDRSA1-01**  
ET51/ET56 8" Battery Cover Attached with Screws (Included)

- Door attaches with included set of screws
- Recommended for high vibration environments
- **Note:** ET50 / ET55 batter doors are **NOT COMPATIBLE** with the new ET51 / ET56 Tablets (and vice versa)

## 10 in. Replacement Battery Doors



**KT-ET5X-10BTDR2-01**  
ET51/ET56 10" Battery Door

- Standard replacement, push-on battery door

- **Note:** ET50 / ET55 internal batteries are **NOT COMPATIBLE** with the new ET51 / ET56 Tablets (and vice versa)

# ET51 Integrated Scanner Tablets

# ET51 8.4" Devices with Integrated SE4710 Scanner & Triggers

## ET51 8 in. Integrated Scanner (Android)



ET51CE-G21E-SFA6 (RoW; 4GB RAM / 32GB Flash)  
ET51CE-G21E-SFNA (NA; 4GB RAM / 32GB Flash)

- ET51CE-G21E-00xx Base Android 8.x Tablet

## ET51 8 in. Integrated Scanner (Windows)



ET51AE-W12E-SF (4GB RAM / 64GB Flash)  
ET51AE-W15E-SF (8GB RAM / 128GB Flash)

- ET51AE-W1xE Base Windows 10 IoT Tablet

## Common Features

- Compact and fully integrated data-centric tablet solution
- Ready out of the box for immediate implementation; No assembly needed
- SE4710 standard range 1D / 2D scan engine
- Red aiming illumination for faster / more accurate performance
- Protective frame houses the scan engine and two triggers
- Increases drop spec to 4 ft (1.2m) to concrete / 5 ft (1.5m) to plywood
- Adjustable pre-installed hand strap fits on either side or back of device
- Ambidextrous scanning triggers (left and right)
- Rugged I/O and Charging Connector included
- **Note:** Optional Auxiliary PowerPack (**BTRY-ET5X-PRPK2-01; sold separately**) can be inserted in optional Expansion Back

# Integrated Scanner Hand Strap

## Hand Strap



**SG-ET5X-SFSTRAP1-01**  
ET5x Integrated Scanner Hand Strap  
Including Side and Back Mounting Screws

- This is a replacement, spare or additional hand strap that is used on ET51 Integrated Scanner devices
- Only compatible with ET51 Integrated Scanner tablets
- Hand strap can be installed in a variety of locations on the tablet
  - left side of tablet
  - right side of tablet
  - right back side of tablet
  - left back side of tablet
- Strap includes washers and five screws with two different lengths
- Different length screws are used depending on attachment point on tablet
- Only two of the five screws are needed

# ET51 with Integrated Scanner Accessories

Only a subset of ET51 8 in. Accessories are *compatible* with these devices



Part Number	Description
CRD-ET5X-SE4CO3-01	4-Slot Charge Only ShareCradle for ALL ET5X Tablets (with or without Integrated Scanner)
SAC-ET5X-4PPK1-01	4 -Slot Bty Chgr For Optional Bty Pwr Pack,Can Be Docked And Powered In The 5-Slot Crd Via Adpt Cup (Sold Separately) Or Used Standalone
CRD-ET5X-1SCG2	1-Slot Charge Only Cradle; Requires Power Supply PWR-BGA12V50W0WW, DC Cable CBL-DC-388A1-01 And 3 Wire Country Specific AC Line Cord Sold Separately
CRD-ET5X-1SCOM2R	1-Slot Dock With Rugged IO Adapter: HDMI, Ethernet, 3xUSB 3.0; Requires Power Supply PWR-BGA12V50W0WW, DC Cable CBL-DC-388A1-01 And 3 Wire Country Specific AC Line Cord Sold Separately
PWR-WUA5V12W0xx	Power Supply VAC, 5 V, 2.5 A with Country Specific Plug (See page 9)
CBL-TC2X-USBC-01	TC2x USB-C Cable
SG-TC7X-STYLUS-03	TC7x 3-Pk Stylus + Tether
SG-ET5X-SLTETR-01	ET5x Stylus Coil Tether
ZBK-ET5X-8RH1-01	8" Expansion Back Accessory + Rotating Handstrap (Optional Battery Sold Separately)
BTRY-ET5X-PRPK2-01	ET5x Optional Powerpack Battery (Second Battery) For 8 in. and 10 in. Expansion Backs
BTRY-ET5X-8IN5-01	Battery Pack, Lithium Polymer, 6440 mAHr / 3.8 V / 24.4 Whr, ET51 Or ET56 8" <b>Android</b> Only, Replacement Internal Battery
BTRY-ET5X-8IN3-01	Battery Pack,Lithium Polymer, 3300 mAHr / 7.6V, ET51 Or ET56 8" <b>Windows</b> Only, Replacement Internal Battery

# ET51 with Integrated Scanner Accessories

Likewise, a subset of ET51 8 in. Accessories are IN-compatible



Part Number	Description
CRD-ET5X-SE4CO2-01	4-Slot ET5x Charge Only Sharecradle
CRD-ET5X-1SCOM1	ET5X 1-Slot Charge and Communication Dock
CHG-ET5X-CBL2-01	Rugged Charge Connector (Charge dongle)
SG-ET5X-8RCSE2-02	8 in. Rugged Frame with Rugged I/O Connector (Included)
SG-ET5X-DCLIP2-02	2 D-Clips attach to Screw Bosses in Rugged Frame
SG-ET5X-8HLST-01	8 in. Operations Case
SG-ET5X-SHDRSTP-01	Break away Shoulder Strap (MOVE TO OTHER TABLE WHEN DCLIPS ARE AVAILABLE)
SG-ET5X-HNDSTP-01	Handle strap
ZBK-ET5X-8SCN5-01	<b>Windows</b> 8 in. SE4750 Expansion Back Accy + Rotating Hand Strap (Optional Battery Sold Separately)
ZBK-ET5X-8SCN5-02	<b>Android</b> 8 in. SE4750 Expansion Back Accy + Rotating Hand Strap (Optional Battery Sold Separately)
ZBK-ET5X-8SCN1-01	<b>Windows</b> 8 in. SE4710 Expansion Back Accy + Rotating Hand Strap (Optional Battery Sold Separately)

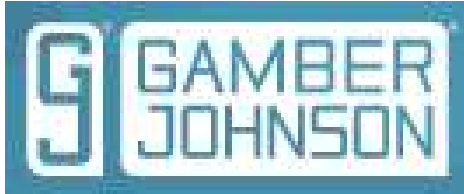
## ET51 & ET56 Third Party Offerings

*The products on the following slides are designed, sold and serviced by parties outside Zebra Technologies.*

*They are offered through the third parties and their reseller networks and are not in Zebra's parts catalog.*

*Zebra does **not** sell, support, nor formally test these products.*





[Gamber-Johnson / Zebra ET5x Tablet Docks & Cradles Web Page](#)

# Gamber-Johnson Rugged Mounting Docks & Cradles

## Keep Your Tablet Safe with Gamber-Johnson Dock or Cradle

- Designed by Gamber-Johnson to support rugged mounting needs; such as, forklifts, emergency vehicles, etc.
- Docking stations replicate tablet ports: USB, Ethernet, RF, and power. Ideal for connecting printers or other peripherals
- Cradles keep your tablet safe but do not replicate any ports. Use these to mount tablets without any peripherals
- Key lockable, VESA 75mm mounting pattern, and clamps to secure the tablet
- Only work with tablets equipped with rugged frame
- Compatible with accessories like expansion backs with scanners and optional power pack battery
- Keyboard mount offered to support iKey keyboards



**3rd party designed, sold and serviced. Zebra does *not* sell, *nor* formally test.**



[ProClip / Zebra ET5x Tablet Holders Web Page](#)

# ProClip Mounting Cradles

## ProClip Precision Manufactured Mounting & Charging Solutions

- Custom designed by ProClip and offered through ProClip / Brodit channels and their reseller network
- Solutions to secure, power, and charge your Zebra mobile device.
- Ideal for delivery vehicle dashboard, warehouse picker, forklift cage, hospital mobile cart, retail counter applications
- Keep your Zebra device within reach and ready to go to work
- Key lock option supported
- Rugged frame and non-rugged frame tablets options are available
- Vehicle mounts for ET51 with Integrated Scanner

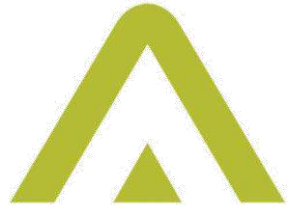


For Europe contact Brodit AB  
Sweden, [www.brodit.se](http://www.brodit.se)



*Kiosk/Wall Sleeve  
with Key Lock*

**3rd party designed, sold and serviced. Zebra does *not* sell,  
*nor* formally test.**



ARMORACTIVE.

[ArmorActive / Zebra ET5x Tablet Mobility Web Page](#)

# ArmorActive Payment & Mobility Solutions

## ArmorActive Mobility and Deployment Solutions Worldwide

- RapidDoc & Kiosk Options
  - Multiple quick and easy tablet release options: RFID (included)
  - Software undock (PIN), Username / password, Biometrics, NFC
  - Universal base for connectivity with ET5x tablets (Windows or Android)
  - Easily fits into work environment, 6 USB Ports and wired Ethernet.
- Payment and Card Reader Options
  - Quick Release Latching Cradles for payment terminal support; includes Verifone e355 and Ingenico iSMP4 EMV readers
  - Sleek and durable Expansion Back for Magnetic Strip (MSR) and Smart Card (SRC) readers
  - Payment Peripheral Integration Options
  - Direct hardwired integration with up to 2 payment peripherals in the ArmorActive Enclosure



**3rd party designed, sold and serviced. Zebra does *not* sell, *nor* formally test.**

**ET51 & ET56 DOCKING STATIONS**

DS-ZEB-100 SERIES / DS-ZEB-200 SERIES

- Standard & Advanced I/O options
- Internal power supply
- LED power indicator
- Spring-loaded docking connector
- Pivoting alignment points
- VESA 75 mounting pattern

**UNIVERSAL CRADLE FOR 11"-14" COMPUTING  
DEVICES**

UT-1001

- Ultra-rugged, weighing 3.72 lbs
- High value non-electronic computing solution
- Customizable to fit your mobile office requirements
- High performance injection molded materials
- Durable powder coat painted top plate
- Ultra-thin & low profile maximizes space and visibility
- Increased vertical and horizontal adjustability

**LOW PROFILE DOCKING STATION**

367-4682-R

- Available for 8" & 10" ET5X tablets, with or without rugged case
- Features 300 degree rotation, 100 degree tilt
- Includes quick release & locking functionality
- Ensures device is always charged & ready to go mobile
- Versatile & durable

**DS-ZEB-100 SERIES****DS-ZEB-200 SERIES**



[InVue / Zebra ET5x Products Web Page](#)

# InVue Security & Payment Docks

## InVue Retail Security and Payment Docking Options

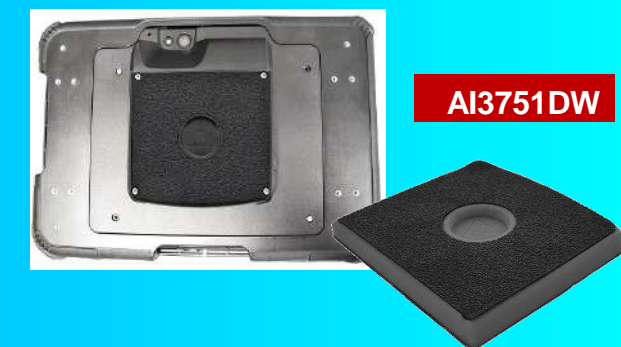
- Retail Security components increase sales, decrease theft, and improve profitability
- Flexible dock features 3-axis viewing, optional mobile POS device integration, and USB 2.0 ports
- Fixed dock for tablet display solution with a point-of-sale option; durable, versatile and tamper resistant
- Useful in any environment and features multiple stand options for counter display, wall mounted and pedestal.
- Create custom solutions that are customer-centric to ensure an ideal experience for retail viewing and mPOS



**3rd party designed, sold and serviced. Zebra does *not* sell, *nor* formally test.**

## Case Solutions for Zebra's ET51/ET56 Tablets

- Designs solutions for mobile customers that need their device on or around them and easily accessible.
  - Holster for 8.4" ET51/56 with Handle
  - Holster for 8.4" ET51/56 with Rugged Frame
  - OP Case for 8.4" ET51/56 & ISMP4 with Hand Strap
  - Holster for 10.1" ET51/56 without Rugged Frame
  - Holster for 10.1" ET51/56 with Expansion Back
  - Magnetic Mount Plate for ET51/56 8.4" Tablet





ZEBRA and the stylized Zebra head are trademarks of Zebra Technologies Corp., registered in many jurisdictions worldwide. All other trademarks are the property of their respective owners. ©2020 Zebra Technologies Corp. and/or its affiliates. All rights reserved.